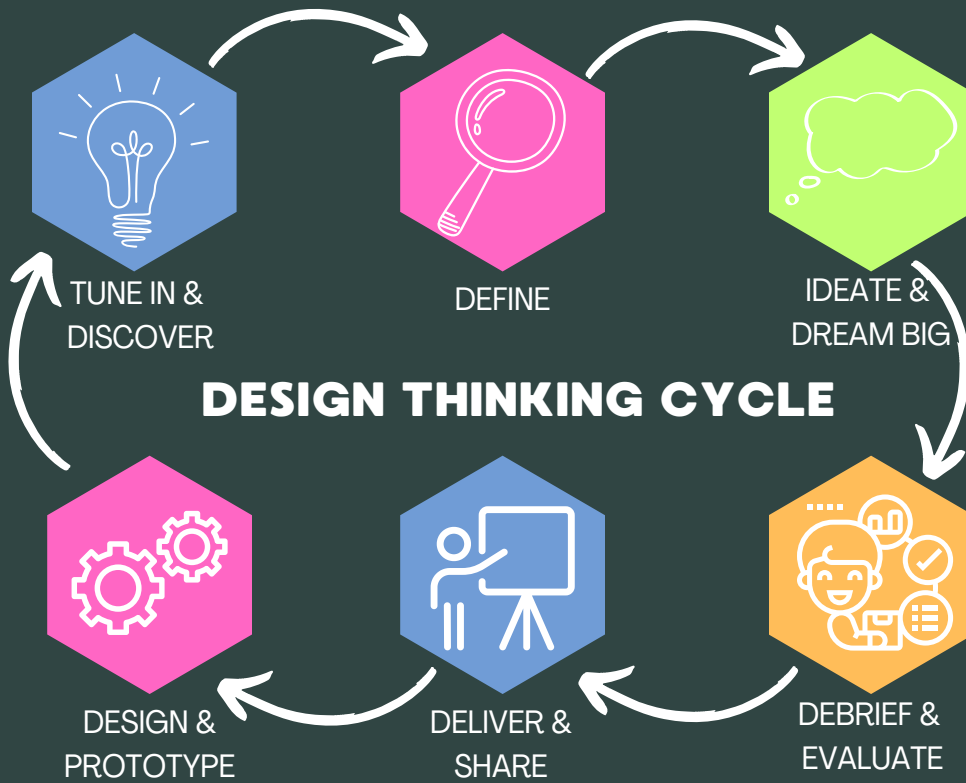
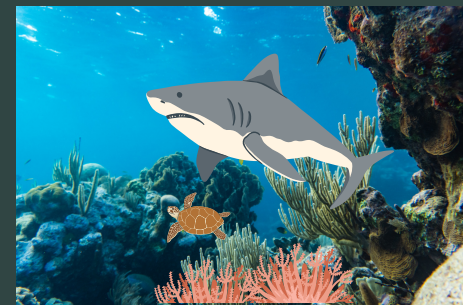


BIOMES UNDER THREAT

How might we address a specific problem facing a chosen biome to ensure the long-term survival of a newly discovered animal?



TUNDRA BIOME



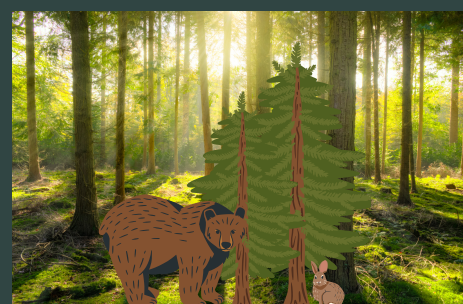
MARINE BIOME



DESERT BIOME



GRASSLANDS BIOME



FOREST BIOME

Task: Your challenge is to investigate a threat facing a biome and how you can find a solution to support the survival of a new species of animal.

KEY UNDERSTANDINGS

THIS CHALLENGE WILL HELP YOU UNDERSTAND:

- The growth and survival of living things are affected by physical conditions of their environment
- The relationships between biomes affected by human alteration and physical environments
- Interconnections change places and environments

KEY SKILLS

THIS CHALLENGE WILL HELP YOU TO:

- Think critically and creatively about a real-world problem
- Problem solve to design solutions and present information
- Collaborate in teams and develop communication skills
- Use higher order thinking skills to the challenge at hand
- Evaluate, reflect on and suggest improvements to scientific investigations
- Develop research skills

DUE DATE: FRIDAY, WEEK 10

EXHIBITION NIGHT: TUESDAY, WEEK 4, TERM 4